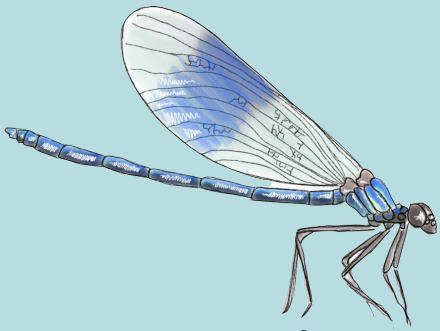


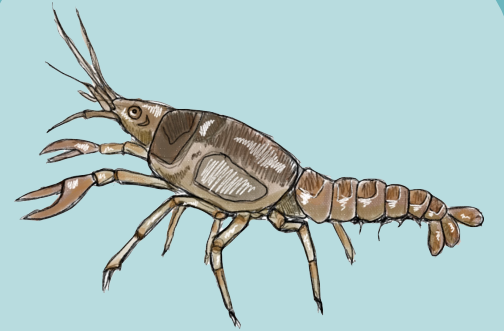
HOWELL WETLANDS MACROINVERTEBRATES



Damselfly
(Coenagrionidae)



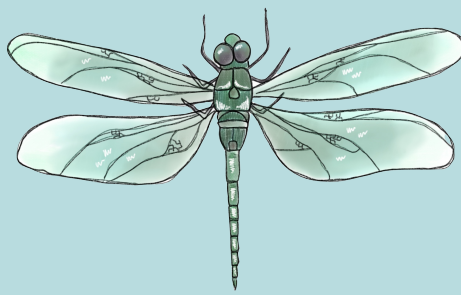
Backswimmer
(Notonectidae)



Crayfish
(Astacidae)



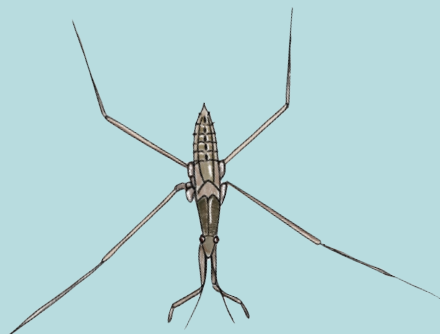
Giant Waterbug
(Belostomatidae)



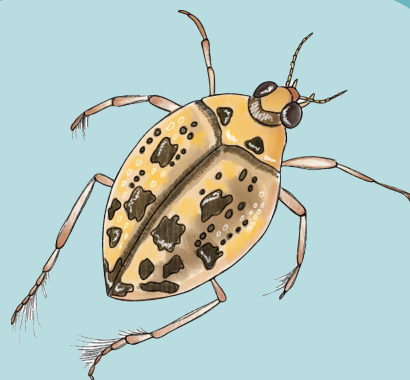
Dragonfly
(Aeshnidae)



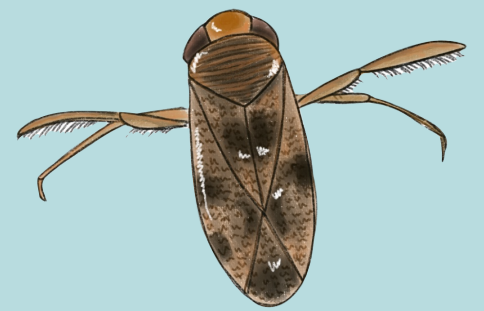
Water Scavenger Beetle
(Hydrophilidae)



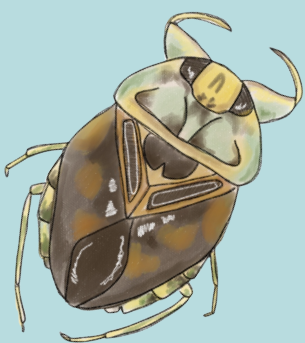
Water Strider
(Gerridae)



Crawling Water Beetle
(Haliplidae)



Water Boatman
(Corixidae)



Creeping Water Bug
(Naucoridae)

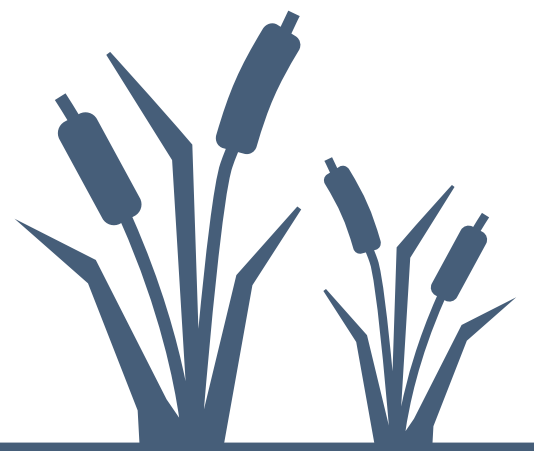


Water Scorpion
(Nepidae)



Ghost Shrimp
(Palaemonetes)

HOW TO FISH FOR MACROINVERTEBRATES



Materials Needed

**Fill one bowl with water and leave one for scooping water*



Tray



Net



Bowl x 2

Step 1. Use net to gather plant material and place into tray.

Step 2. Pour water into your tray to allow macroinvertebrates to swim around.

Step 3. Use spoon to move plant material around and to catch the macros swimming in your tray. Move them into the collection bowl filled with water to view.

Step 4. Once finished make sure to return plant material and macros back into the wetlands.

Step 5. Rinse tray by dunking into water and return materials to boardwalk.



Learn more about
Howell Wetlands!
Scan the code to
visit our website.

